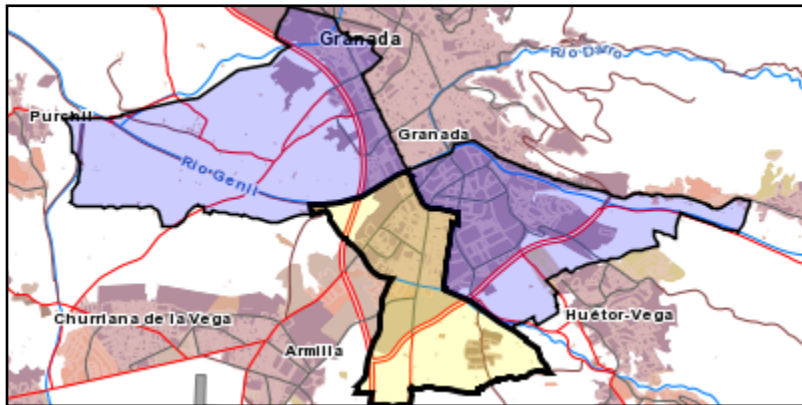
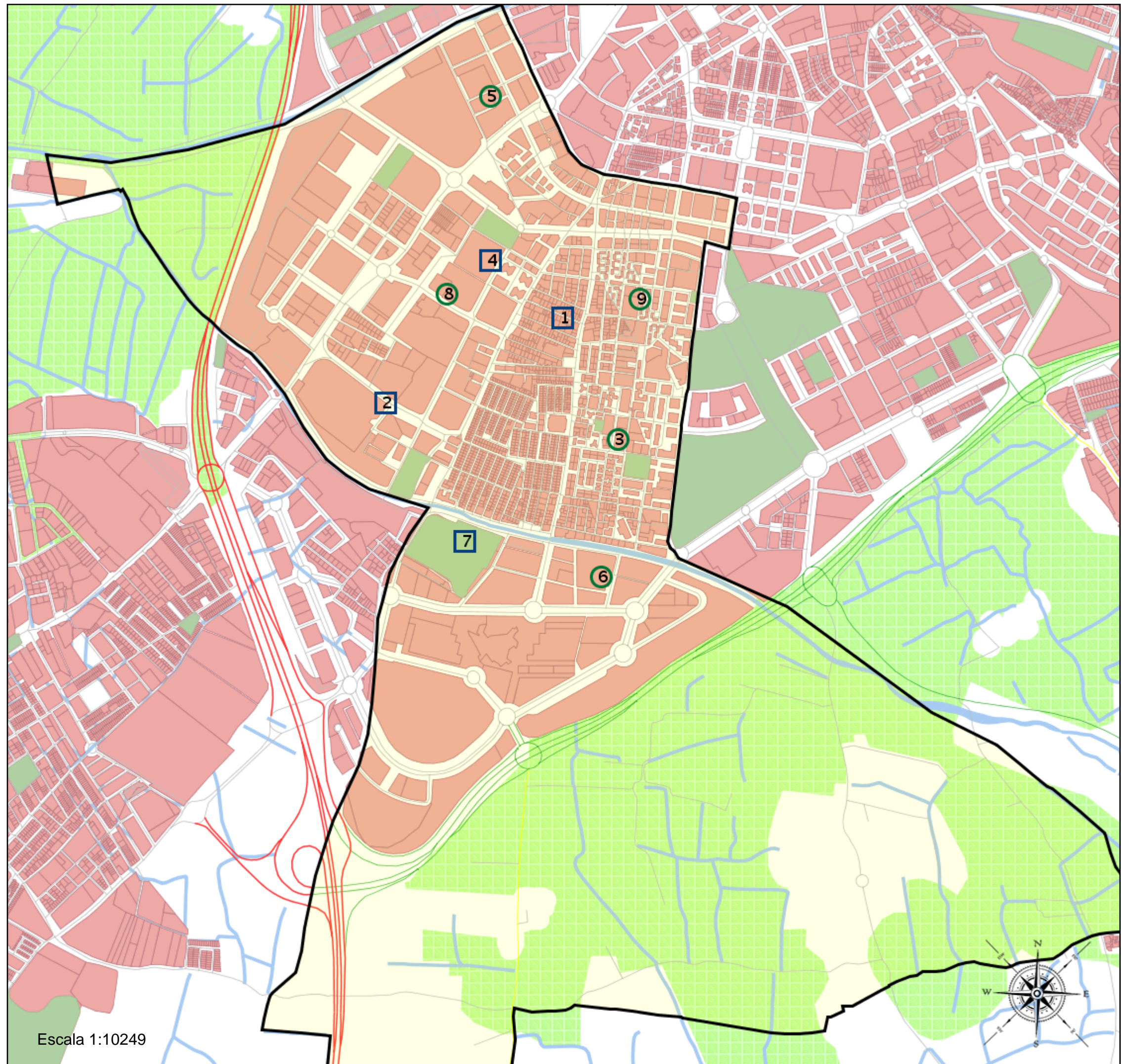




Área de influencia escolar Granada

Granada_I_P_09
18087_19_CGTA_7_GENIL_I_P_09 (Segundo Cic. Infantil/Primaria)

- (1) 18002917 - C.D.P. Santa Marta
- (2) 18003016 - C.D.P. El Carmelo
- (3) 18003545 - C.E.I.P. Reyes Católicos
- (4) 18003612 - C.D.P. San Juan Bosco
- (5) 18003727 - C.E.I.P. Jardín de la Reina
- (6) 18003740 - C.E.I.P. Gallego Burín
- (7) 18003791 - C.D.P. Juan XXIII-Zaidín
- (8) 18009456 - C.E.I.P. Vicente Aleixandre
- (9) 18009547 - E.I. Generalife



Leyenda

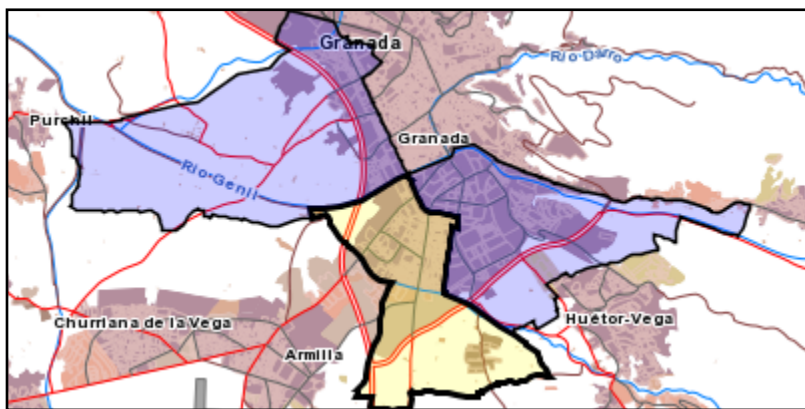
-  Centros públicos
-  Centros concertados

Escala 1:10249

Área de influencia escolar Granada

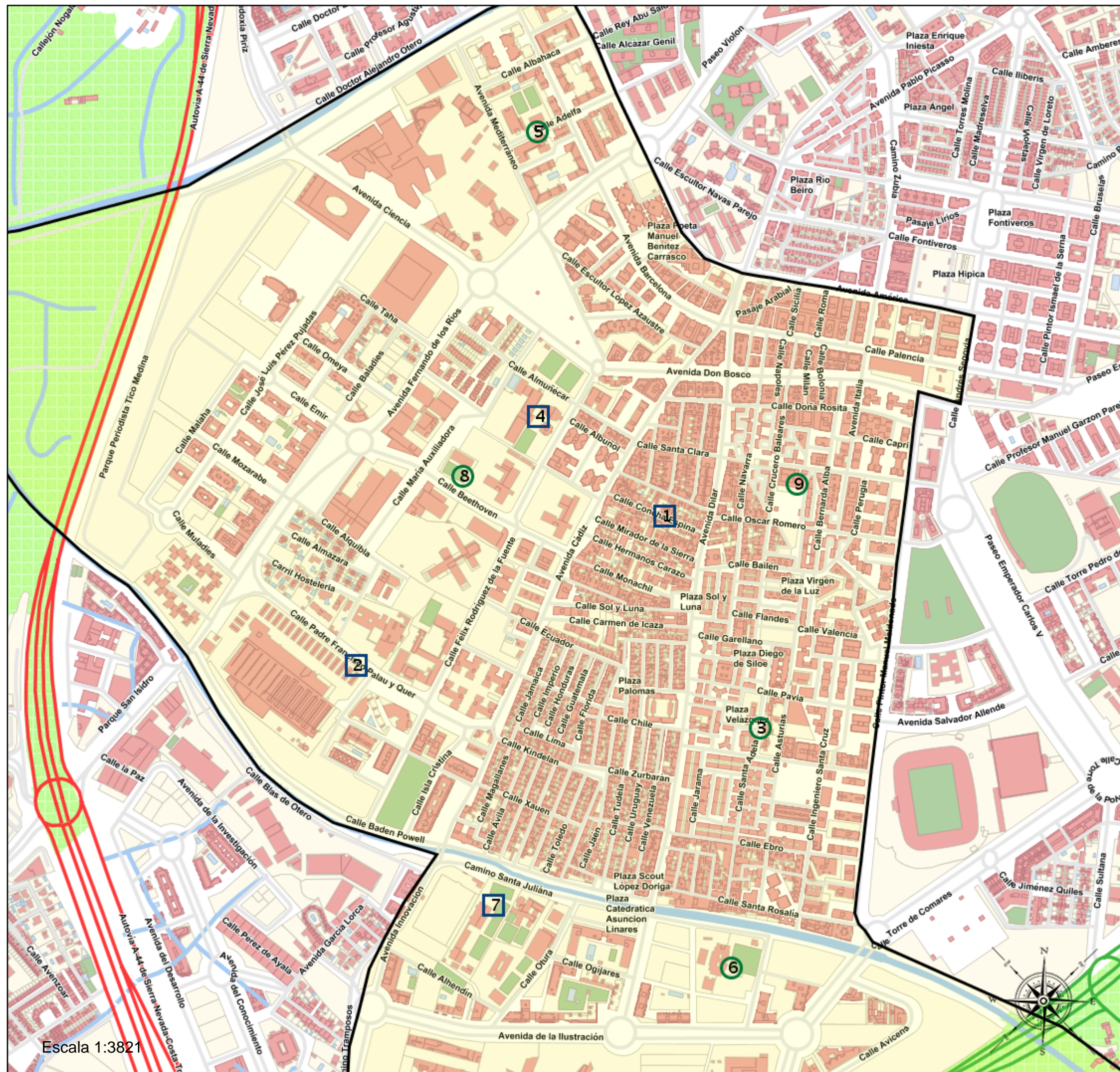
Granada_I_P_09
18087_19_CGTA_7_GENIL_I_P_09 (Segundo Cic. Infantil/Primaria)

- (1) 18002917 - C.D.P. Santa Marta
- (2) 18003016 - C.D.P. El Carmelo
- (3) 18003545 - C.E.I.P. Reyes Católicos
- (4) 18003612 - C.D.P. San Juan Bosco
- (5) 18003727 - C.E.I.P. Jardín de la Reina
- (6) 18003740 - C.E.I.P. Gallego Burín
- (7) 18003791 - C.D.P. Juan XXIII-Zaidín
- (8) 18009456 - C.E.I.P. Vicente Aleixandre
- (9) 18009547 - E.I. Generalife



Leyenda

- Centros públicos
- Centros concertados



Escala 1:3821